

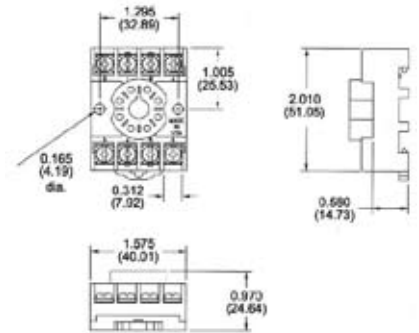
SOCKETS & ACCESSORIES

8 Pin Octal Socket-- Surface or DIN Rail-Mounted

10A @ 600V *
1 or 2 #12-22 AWG Wire
Pressure Wire Clamp Terminations



Product Number 70169-D

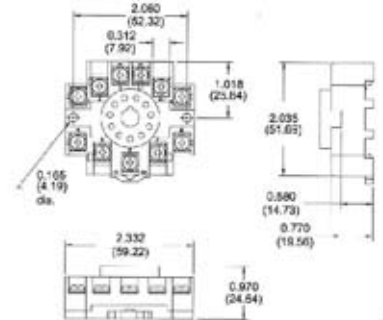


11 Pin Octal Socket-- Surface or DIN Rail-Mounted

10A @ 300V
1 or 2 #12-22 AWG Wire
Pressure Wire Clamp Terminations



Product Number 70170-D

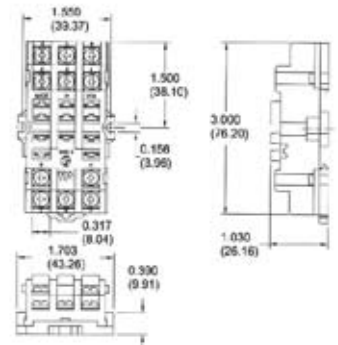


11 Pin Quick-Connect Socket-- Surface or DIN Rail-Mounted

10A @ 300V
1 or 2 #12-22 AWG Wire
Pressure Wire Clamp Terminations



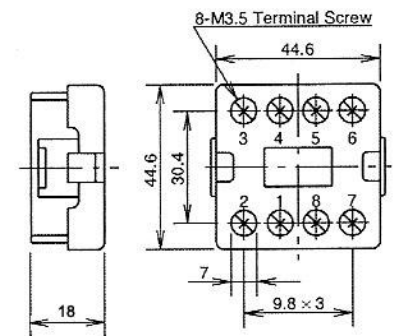
Product Number 70171-D



8 Pin Octal Socket-- Back-Mounted

10A @ 300V
Pressure Wire Clamp Terminations

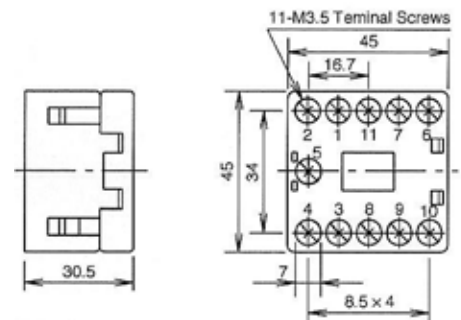
Product Number SR6P-M08G



11 Pin Octal Socket-- Back-Mounted

10A @ 300V
Pressure Wire Clamp Terminations

Product Number SR6P-M11G



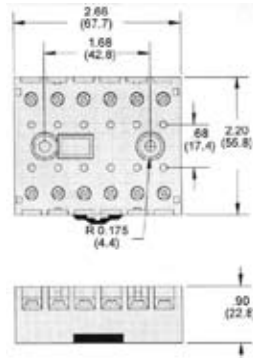
* Plug-in Three-Phase Monitor Relays require a 600V-rated socket when used on system voltages greater than 300V.

SOCKETS & ACCESSORIES

12 Pin Socket-- Surface or DIN Rail-Mounted

Product Number 27390D

10A @ 600V
#12-20 AWG Wire
Pressure Wire Clamp Terminations



Hold Down Spring Product Number 70166

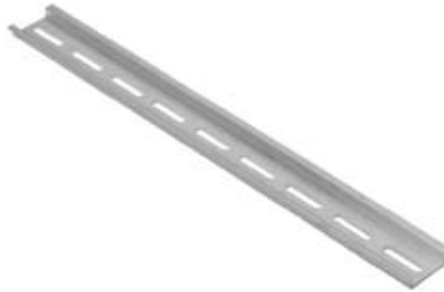
Can be used for:

- ◆ Panel-Mounted Sockets
- ◆ Sockets Mounted to 35mm DIN Track *

* Requires two machine screws with washers & nuts--
contact Macromatic for more information.



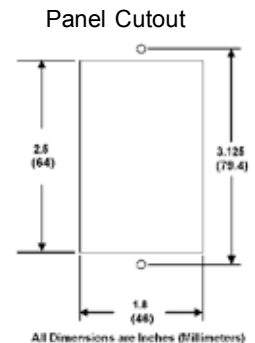
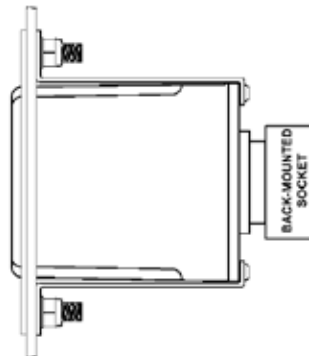
35mm DIN Mounting Track (1 Meter Section) Product Number 70100



Panel Mount Assembly For Panel Mounting Standard Plug-in Products Product Number 70400

This assembly provides a simple & economical method to mount plug-in products to the deadfront of an enclosure/panel:

- ◆ Sturdy aluminum construction
- ◆ Stainless steel studs
- ◆ All mounting hardware included
- ◆ White textured painted finish
- ◆ 2 3/16" W x 3 7/16" H



(Relay Not Included with Assembly--
Shown for Reference Only)